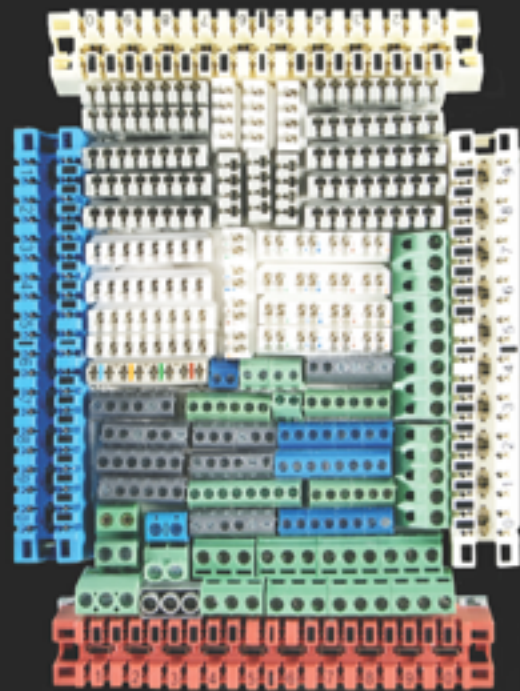
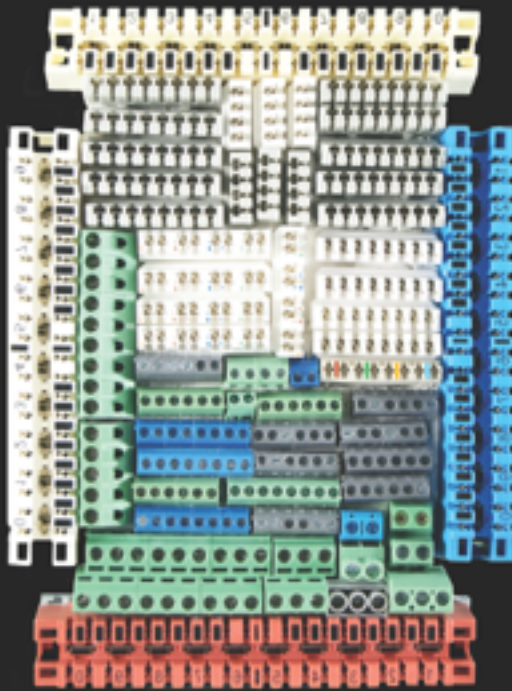
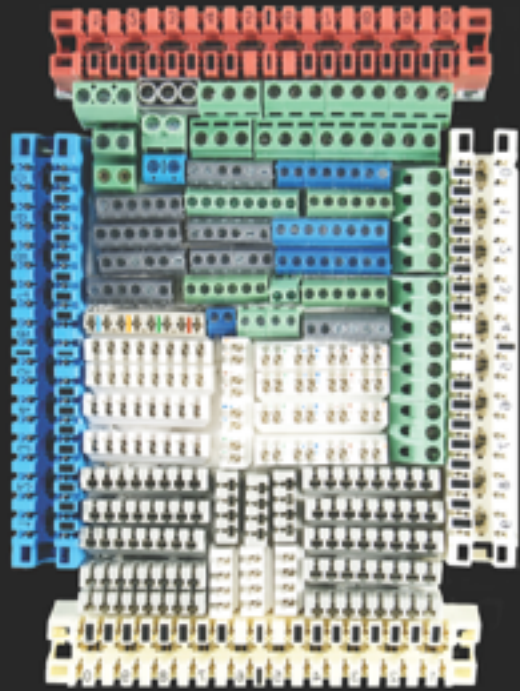
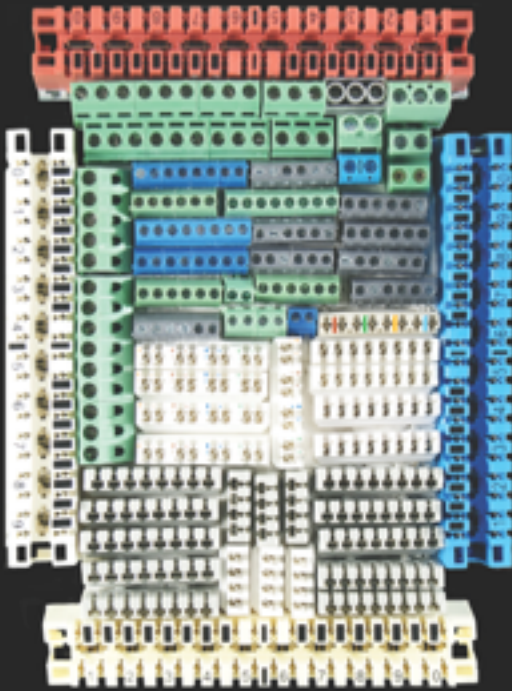




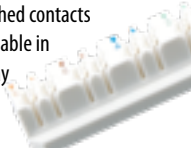


VOICE SERIES® TERMINAL CONNECTIONS






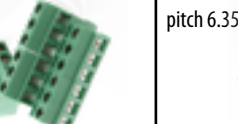

INELCO®
THE DISTINCTION



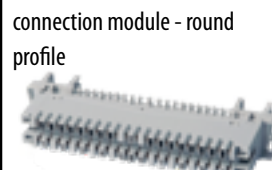
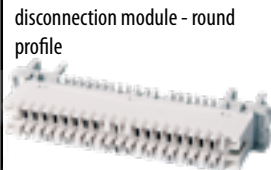
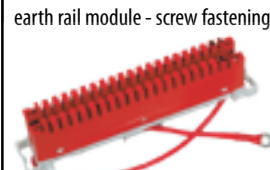
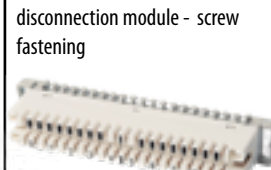
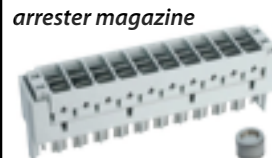
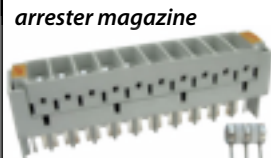

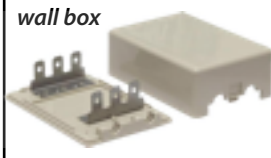
punchdown blocks	<p>Technical Spec.:</p> <ul style="list-style-type: none"> • Voltage Rating: 250VDC • Current Rating: 1.5A • Contact Resistance: 10 m max. • Insulation Resistance: 1,000M min. @ 500VDC • Dielectric Strength: 1,000 VAC, 60Hz, 1min. • Housing Material: PC UL94V-0 • Contact Material: Phosphor Bronze w Silver or Tin plating • Wire: AWG 24-26 • Storage Temp.: -20°C to +80°C ; humidity 95% • Operational Temperature: 0°C to 70°C 	<p>Part-Numbers: PDBZY(Px)</p> <p>PDB = Punch Down Block Z = Quantity of Connections Y = Style</p> <p>0 = 0° straight contacts A = 45° angled contacts B = batched contacts (CAT5e) S = stackable block H = 110 idc</p> <p>Px = with color or number print</p>
-------------------------	--	---

<p>straight contacts available in 4 and 8 way</p> 	<p>angled contacts available in 2, 3, 4 and 8 way</p> 	<p>batched contacts available in 8 way</p> 	<p>stackable blocks available in 4 way</p> 	<p>110 idc available in various designs</p> 
---	---	--	--	---

screw terminals	<p>Technical Spec.:</p> <ul style="list-style-type: none"> • Contact: Phosphor Bronze Nickel plated • Pin header: Brass Tin plated • Housing: PBT, UL94V-0 • Screw: Steel Zinc plated • Temp. Range: -30°C to +120°C • Max Soldering: +250°C for 5 sec • Rated up to 300V @ 10A • Contact resistance: 20m • Insulation resistance: 5,000M • Withstanding voltage: 1,500V AC/1min 	<p>Part-Numbers: SCREWYYZZ(Px)</p> <p>SCREW = Punch Down Block YY = Quantity of Connections ZZ = pitch</p> <p>35 = pitch 3.5mm 38 = pitch 3.8mm 45 = pitch 4.5mm 50 = pitch 5.08mm 63 = pitch 6.35mm</p> <p>Px = with color or number print</p>
------------------------	---	--

<p>pitch 3.50mm</p> 	<p>pitch 3.80mm</p> 	<p>pitch 4,50mm</p> 	<p>pitch 5.08mm</p> 	<p>pitch 6.35mm</p> 
---	---	---	---	---

Isa-plus	<p>Technical Spec.:</p> <ul style="list-style-type: none"> • Voltage Rating: 250VDC • Current Rating: 1.5A • Contact Resistance: 10 m max. • Insulation Resistance: 1,000M min. @ 500VDC • Dielectric Strength: 1,000 VAC, 60Hz, 1min. • Housing and Base Material: PBT UL94V-0 • Contacts: Phosphor Bronze 0.50mm thickness • Plating: Silver 20 or 200µ" over Nickel 30µ"...80µ" • Cable: solid copper wires Ø 0.4mm...0.8mm • Wire: AWG 24-26 	<p>Part-Numbers: XMYZZZQO</p> <p>XM = Type CM = connection module DM = disconnection module EM = earth rail module</p> <p>YY = connection count ZZZ = silver plating in µ" Q: R = round profile S = screw fastening O = Options</p>
-----------------	---	---

<p>connection module - round profile</p> 	<p>disconnection module - round profile</p> 	<p>earth rail module - screw fastening</p> 	<p>connection module - screw fastening</p> 	<p>disconnection module - screw fastening</p> 
<p>arrester magazine</p> 	<p>arrester magazine</p> 	<p>accessories</p> 	<p>wall box</p> 	<p>IP54 wall box</p> 